

# 15" Wide WALL CABINETS

**Item #:** \_\_\_\_\_ **Qty #:** \_\_\_\_\_

**Model #:** \_\_\_\_\_

**Project #:** \_\_\_\_\_



**SLIDING DOORS**  
(Shown with Optional Door Lock)



**HINGE DOORS**  
(Shown with Optional Door Lock)



**OPEN**

## THREE AVAILABLE OPTIONS!

**WCS Series**

L	Sliding Door Unit	# of Doors	Wt.	Cu.
36"	NOT AVAILABLE			
48"	WCS-15-48	2	155 lbs.	21
60"	WCS-15-60	2	185 lbs.	26
72"	WCS-15-72	2	220 lbs.	31
96"	WCS-15-96	4	295 lbs.	41

**WCO Series**

L	Open Door Unit	Wt.	Cu.
36"	WCO-15-36	95 lbs.	17
48"	WCO-15-48	120 lbs.	21
60"	WCO-15-60	145 lbs.	26
72"	WCO-15-72	180 lbs.	31
96"	WCO-15-96	240 lbs.	41

**WCH Series**

L	Hinged Door Unit	# of Doors	Wt.	Cu.
36"	WCH-15-36	2	120 lbs.	17
48"	WCH-15-48	2	150 lbs.	21
60"	WCH-15-60	2	180 lbs.	26
72"	WCH-15-72	4	240 lbs.	61
96"	WCH-15-96	4	320 lbs.	41

**FEATURES:**

Wall hung cabinet with intermediate shelf.  
Sloping Top enhances sanitary configuration.

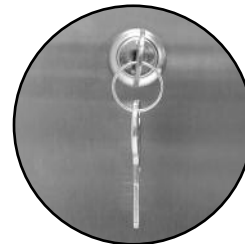
**CONSTRUCTION:**


All TIG welded using the TIG process.  
Welded seams finished to match adjacent surfaces.  
Unit polished to a satin finish.

**MATERIAL:**

18 gauge type 430 series stainless steel.  
Stainless steel hinges and handles.  
Mounting hardware is not supplied.

**OPTIONAL  
DOOR LOCK  
TA-46**



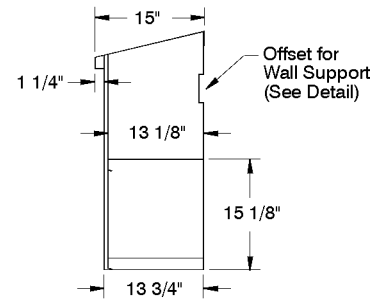
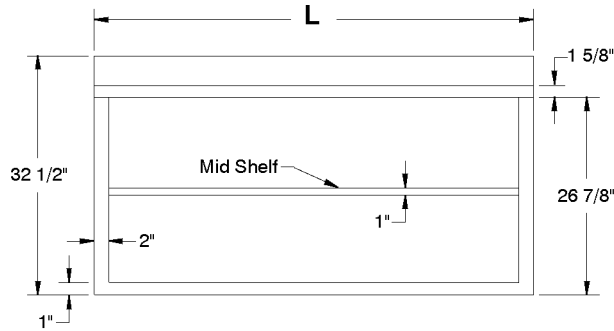
	<p><b>Customer Service Available To Assist You 1-800-645-3166 8:30 am - 8:00 pm E.S.T.</b></p> <p>Email Orders To: <a href="mailto:customer@advancetabco.com">customer@advancetabco.com</a>. For Smart Fabrication™ Quotes, Email To: <a href="mailto:smartfab@advancetabco.com">smartfab@advancetabco.com</a> or Fax To: 631-586-2933</p>			
	<p><b>NEW YORK</b> Fax: (631) 242-6900</p>	<p><b>GEORGIA</b> Fax: (770) 775-5625</p>	<p><b>TEXAS</b> Fax: (972) 932-4795</p>	<p><b>NEVADA</b> Fax: (775) 972-1578</p>

# DETAILS and SPECIFICATIONS

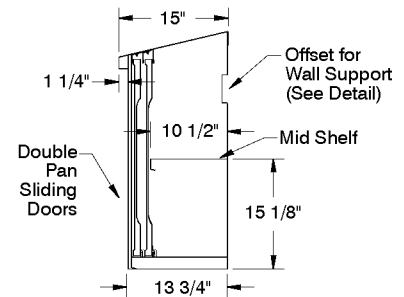
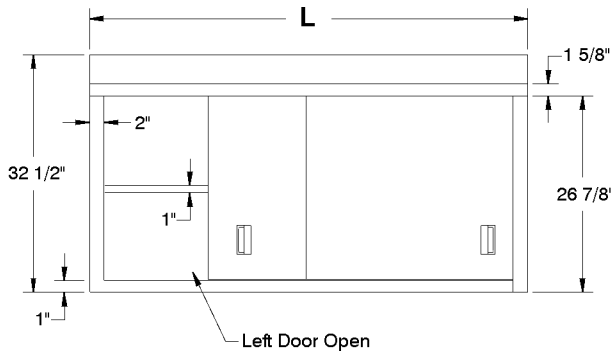
TOL ± .500"

ALL DIMENSIONS ARE TYPICAL

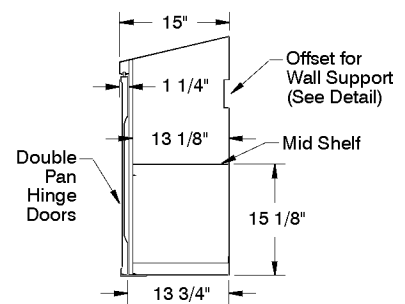
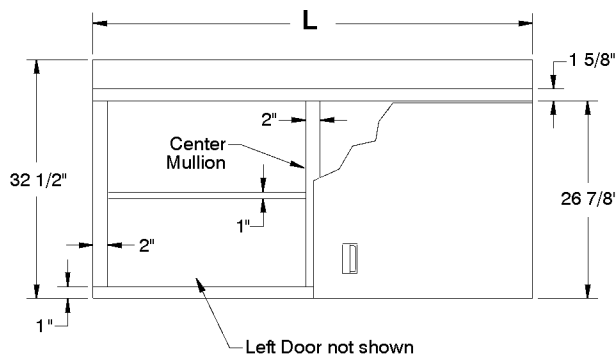
## WCO-Series Open Style



## WCS-Series Sliding Door Style



## WCH-Series Hinge Door Style



### OFFSET DETAIL

